

Ashtons

Foss Place Foss Islands Road YO31 7AF

£1,000 PCM

1



1



1



E



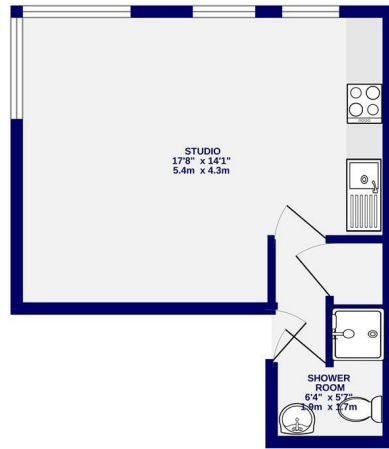
A modern studio apartment located minutes walk from the city centre plus benefitting from allocated parking. Enjoying Minster Views the property is furnished and comprises entrance in to open plan living/ kitchen / sleeping area. The kitchen includes integrated fridge, oven/hob, washer/dryer. Modern shower room. Electric heating. Allocated parking.

SINGLE OCCUPANCY ONLY

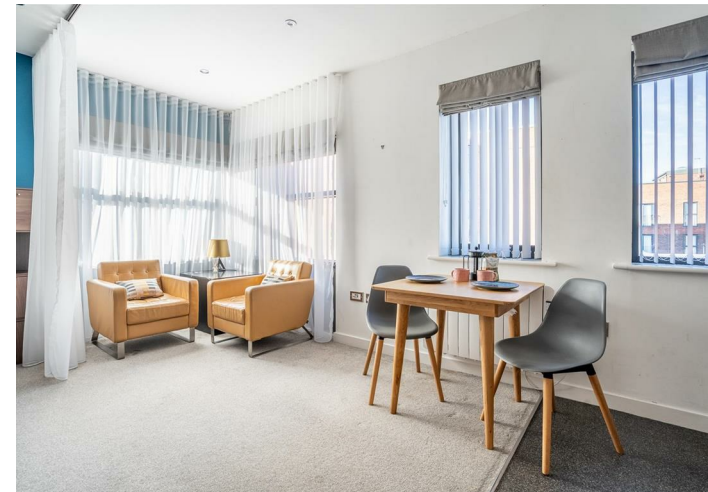
Available 1st July

Council Tax Band A / EPC Rating E / Deposit £1100

2ND FLOOR
285 sq.ft. (26.5 sq.m.) approx.



TOTAL FLOOR AREA: 285 sq.ft. (26.5 sq.m.) approx.
While every effort has been made to ensure the accuracy of the floorplan, measurements of rooms and any other areas are approximate. It depends on the area the agent is measuring and how part of the room is used.
Read our full disclaimer for more information on our disclaimer. This plan is for illustrative purposes only and should be used as a guide only for any prospective purchaser. For further, terms and conditions please visit our website and our agent's website for more information.
Made with Maptogo 2022



Ashtons Lettings



01904 731404



lettings@ashtonsnet.com

